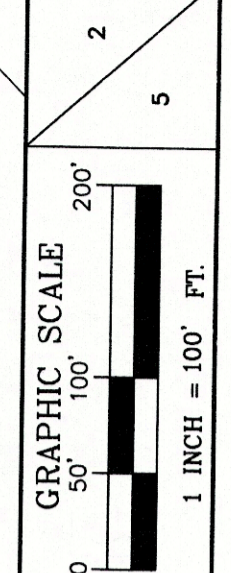
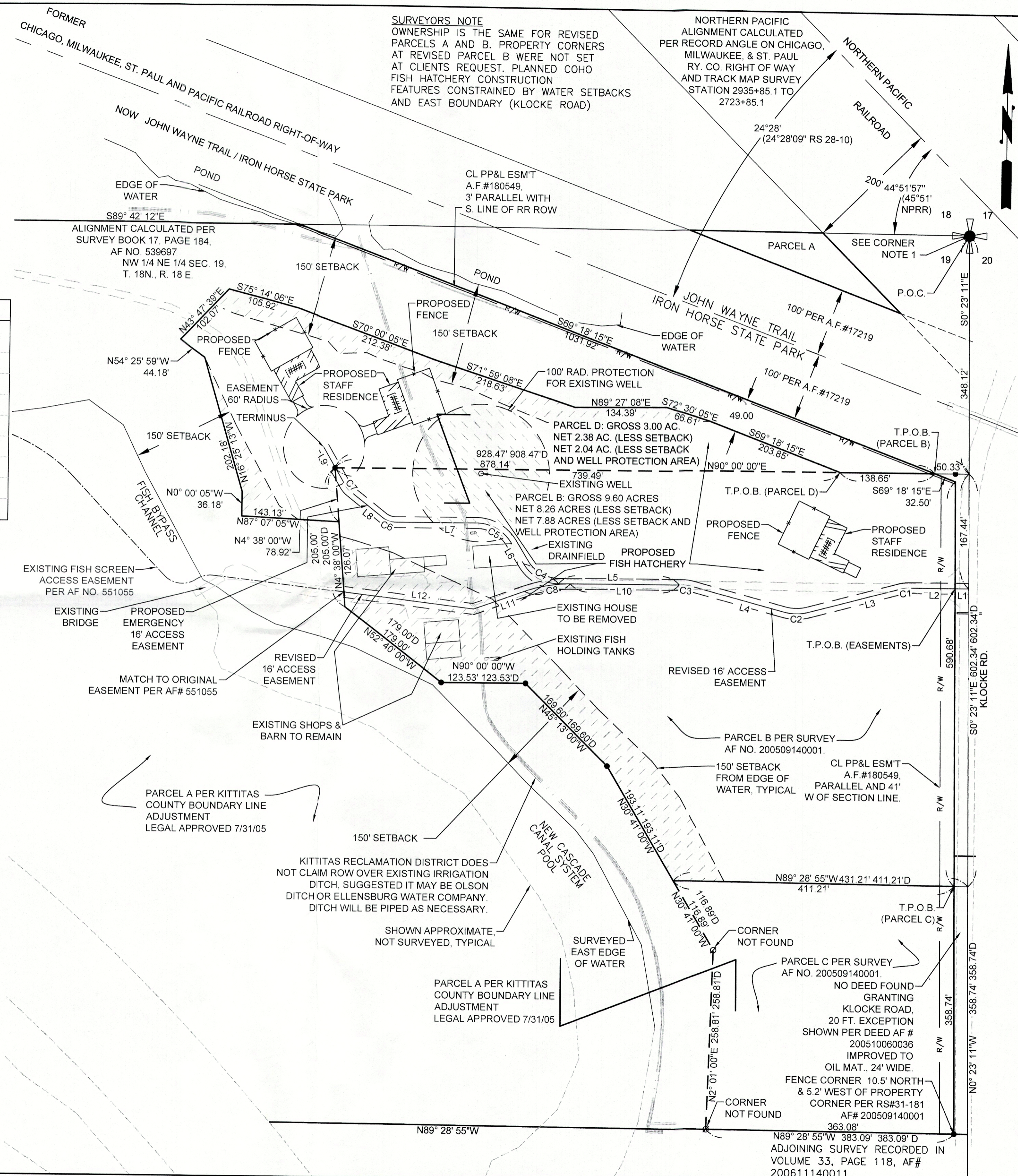
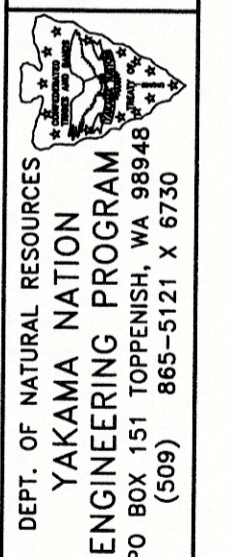


LINE TABLE		
LINE #	LENGTH	DIRECTION
L1	20.00	N90° 00' 00"W
L2	66.33	N90° 00' 00"W
L3	137.01	S75° 00' 00"W
L4	137.20	N75° 00' 00"W
L5	177.01	N90° 00' 00"W
L6	35.74	N31° 19' 19"W
L7	118.87	N90° 00' 00"W
L8	60.92	N51° 26' 29"W
L9	64.24	N30° 00' 00"W
L10	159.68	N90° 00' 00"W
L11	79.21	S70° 02' 21"W
L12	191.53	N83° 02' 50"W

CURVE TABLE					
CURVE #	LENGTH	RADIUS	DELTA	CHD DIR	CHD LEN
C1	15.71	60.00	15°00'00"	S82° 30' 00"W	15.66
C2	36.65	70.00	30°00'00"	N90° 00' 00"W	36.23
C3	20.94	80.00	15°00'00"	N82° 30' 00"W	20.88
C4	61.45	60.00	58°40'41"	N60° 39' 40"W	58.80
C5	61.45	60.00	58°40'41"	N60° 39' 40"W	58.80
C6	20.19	30.00	38°33'31"	N70° 43' 15"W	19.81
C7	11.23	30.00	21°26'29"	N40° 43' 15"W	11.16
C8	68.28	196.00	19°57'39"	N80° 01' 10"E	67.94



NE 1/4 OF THE NE 1/4 AND THE NW 1/4 OF THE NE 1/4 OF SEC. 19, T. 18 N., R. 18 E., W.M. KITTITAS COUNTY, WASHINGTON.



RECORD SURVEY FOR A BOUNDARY LINE ADJUSTMENT FOR THE YAKIMA KLICKITAT FISHERIES PROJECT

